



406 Local Emergency Receiver

406 Local Emergency Receiver

Locally Manage Individual
Beacons for MOB or Lost
Persons

Provides Immediate Alarm
on Vessel or Rescue Station

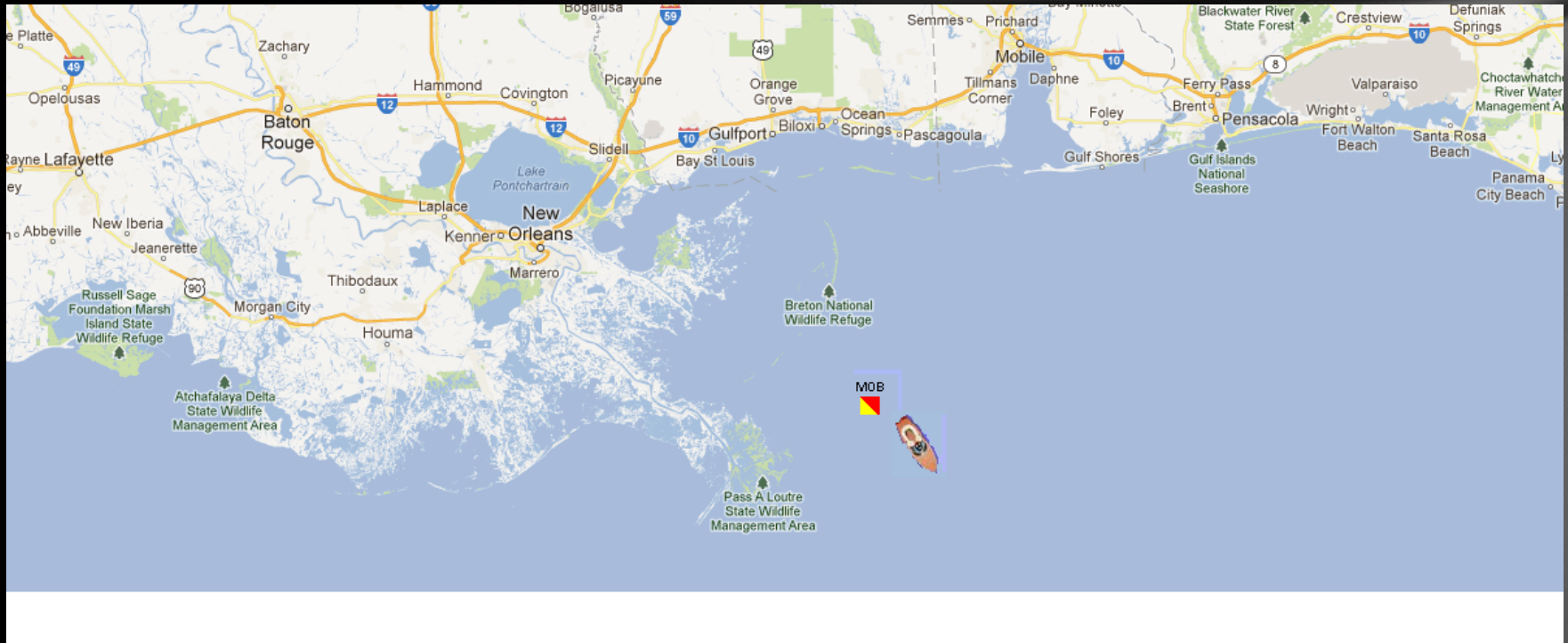
Compatible with any
NMEA Navigation
System

Instantly Read and Locate
PLB Distress Signals



Locate Any 406 Beacon In Seconds

- When the Test or full Activation button is pressed, real-time GPS coordinates are relayed to your mapping system.



Locate Any 406 Beacon In Seconds

- The 406-SD-1 detects beacons in difficult coverage areas as well as provide faster emergency notification in a local system(s).
- Beacons maintain full SARTSAT global capability for serious emergencies.



Micro Technologies v1.0.1.8 406 Beacon Decoder

Contic:

General

Hex 15 Id: 40043C4801572E3
Country: 512 - New Zealand
Protocol: Std Location - EPIRB MMSI

Checksum: 9EE33

Control

Open Close

COM4

SD Card Data

Read Cancel

Start End

1 10

121 dBm
Alert

23456

Map View

History

| Time | Hex 15 Id | Position |
|--------------------|-----------------|------------------------|
| DEMO 13/03/2012 1 | 400C59096FFBFF | No Position |
| DEMO 15/03/2012 1 | 400C59096FFBFF | Default Position |
| DEMO 16/03/2012 1 | 400C59096FFBFF | Default Position |
| DEMO 17/03/2012 1 | 400C4032C00001 | No Position |
| DEMO 18/03/2012 1 | 400C4032C00001 | No Position |
| DEMO 18/03/2012 1 | 40043C4801572E3 | 43°32'12.5 172°43'04 E |
| DEMO 18/03/2012 1 | 400B0802015401 | No Position |
| DEMO 10/04/2012 4 | C00B19F87594001 | No Position |
| DEMO 0 13/03/2012 | 400C5929CFFBFF | Default Position |
| 23/10/2012 9:02:47 | 401C59000FFBFF | No Position |
| SD-042 23/10/2012 | 401C59000FFBFF | No Position |
| SD-041 23/10/2012 | 40043C4801572E3 | 43°31'28.5 172°43'04 E |
| SD-040 23/10/2012 | 401C59000FFBFF | No Position |

How does it work?



Applications:

Man Overboard (MOB) alarms



Yacht Club Distress Monitoring



National Parks Emergency Tracking



Lost Diver Location Systems



406 Transmission Logging and Emailing

Land based vehicle final location of distress signals.

Simple 406 beacon testing.